

**Stanley Widmer Associates, Inc.**  
**Military & Law Enforcement Boats**

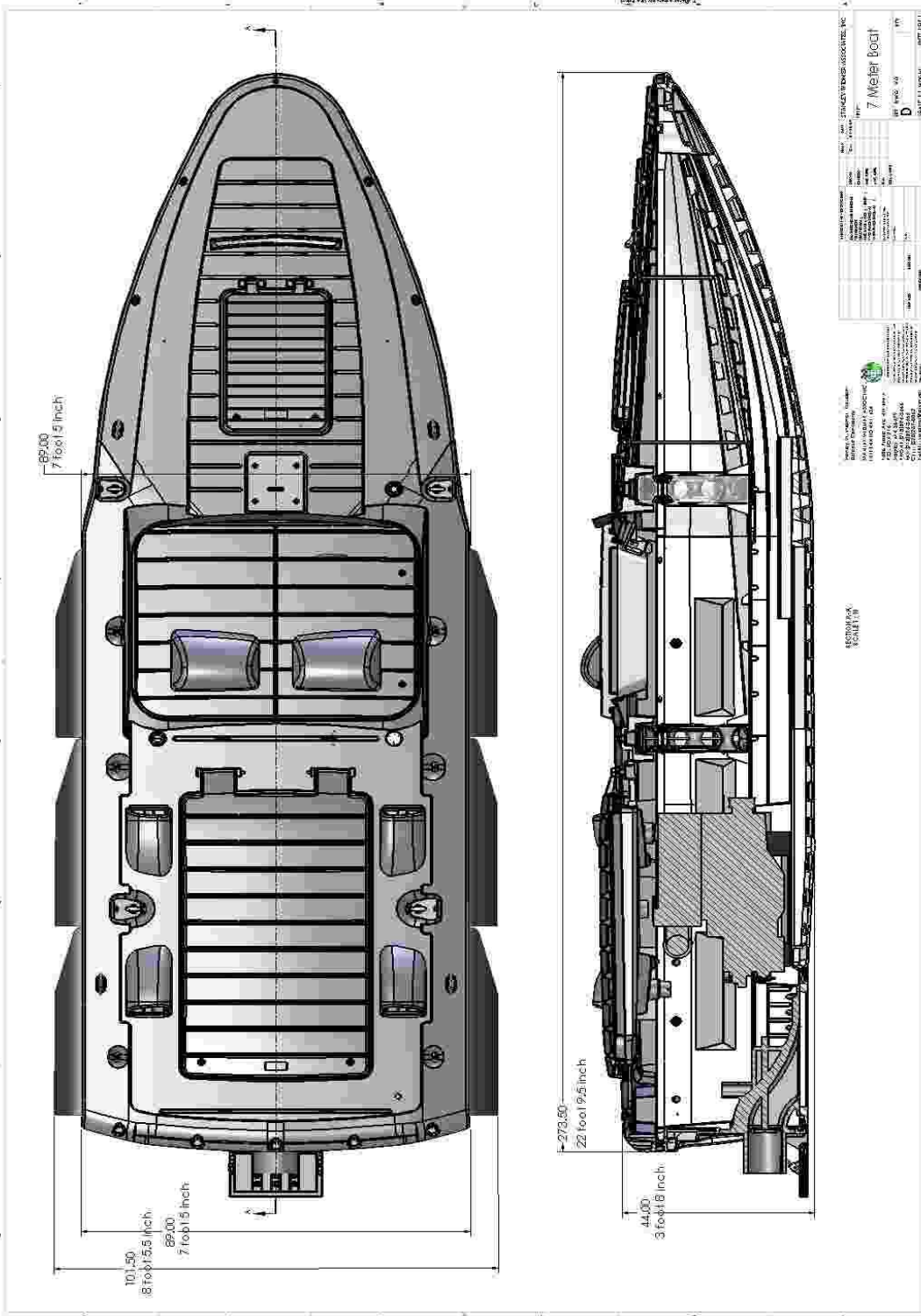
Oct-11



**FLEX RIDE NIGHT RAIDER 7m Diesel inboard/Jet**

**Technical Specifications**

Description	Specification	
	English	Metric
Length overall	24.6 ft	7.5 m
Beam overall	8.5 ft	2.6 m
Draft - static	15 in	38 cm
Speed maximum WOT 4300 rpm	38 mph	61 kph
Range @ 3440 rpm cruise (24 l/hr)	131 mi	211 km
Person capacity	2	
Standard HP	246 hp	184 kw
Maximum HP	400 hp	298 kw
Fuel capacity - (optional tank available)	30 gal	113 l
Light ship condition	4100 lb	1860 kg
Load items - fuel, people, payload	1700 lb	771 kg
Full load condition - hoist weight	5800 lb	2631 kg
Freeboard aft	29 in	74 cm
Freeboard amidship	31 in	79 cm
Deadrise aft	15 degrees	
Deadrise amidship	16 degrees	
Deadrise forward	20 degrees	
Length of Rigid Hull	22.9 ft	7 m
Beam of Rigid Deck	7.4 ft	2.3 m
Cockpit length	40 in	102 cm
Cockpit width	55 in	140 cm
Cockpit depth	29 in	74 cm
Tube diameter	14 in	35.5 cm
Tube number	6	
Tube volume	21 cf	595 l
Sponson material	PVC	
Hull and Deck material	Cross-link HDPE	



STERNEN WINDS ASSOCIATES, INC.  
 7 Meier Boat  
 D 1000 04  
 11/11/2014 09:07:01 AM

SECTION: SKETCH 1/18